

# Lifetime Learners Institute at NCC

## 2018 Summer Catalog



### *Welcome to the Lifetime Learners Institute's Summer 2018 Session!*

Summer is a time of leisure, bright sunny days and not too much to do, and until now you didn't have Lifetime Learners courses to pique your interest, hold your attention or teach you something new. So, to satisfy your hunger, LLI is offering additional learning opportunities to help you get through the hot summer months in a comfortable air-conditioned environment.

LLI continues to find ways to innovate, and when Norwalk Community College's President, Dr. David Levinson suggested we take advantage of the summer, we took his advice and came up with a shortened series of courses to tide you over until the fall. There are fewer students and much more parking available, but there is one thing that will never change—and that is LLI's commitment to quality courses presented by quality instructors. So, take a stroll through the summer courses to see what strikes your fancy.

#### **COURSE FACTS:**

Summer courses run for four weeks: Classes will be held from July 10 thru August 3, 2018.

Each course meets once per week. All summer courses require paid registration in advance.

*New!* Morning class time added: 10:10am—11:50am. Other classes start at 1:10pm and 3:10pm.

There are no Lunch & Learn events during the Summer Session.

**For schedule, registration and membership instructions, please see the last pages.**



Lifetime Learners Institute at Norwalk Community College, 188 Richards Avenue, Norwalk, CT 06854

E-mail: [info@lifetimelearners.org](mailto:info@lifetimelearners.org) Phone: 203-857-3330 Website: [www.lifetimelearners.org](http://www.lifetimelearners.org)



## GREAT SCIENCE FICTION FILMS

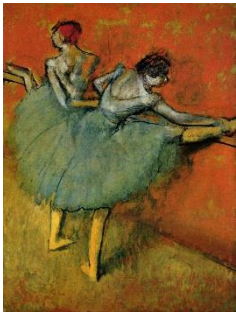


This course will discuss and analyze some of the great science fiction films. Films to be discussed include *2001: A Space Odyssey*; *The Terminator*; *Silent Running*; *Close Encounters of the Third Kind*; *Invasion of the Body Snatchers*; *I, Robot*, and *The Day the Earth Stood Still*, as well as scenes from *Star Trek*.

*Paul Gettler* is a graduate of New York University and the CUNY graduate school. He has taught in several adult education programs. His interests include politics, history and film.

**Four sessions Wednesdays, July 11, 18, 25, August 1 at 1:10-2:50pm**

## IMPRESSIONISTS AT HOME



Impressionists are known for their love of light, but let's explore their homes and retreats. We will learn more intimately how they lived through the interiors of their homes. This will give us an extraordinary vantage point into the fashions and furnishings of this era which will enable us to appreciate the simple pleasures that this group of fascinating individuals enjoyed. The 19<sup>th</sup> century ushered in revolutionary new ways of heating, lighting and moving around, which in turn impacted and transformed interiors and private lives. We will include glimpses of their homes and private spaces—kitchens, bathing, dining, living and sleeping areas. Come cool off this summer in the interior spaces of the Impressionists!

*Darby Cartun* has a B.S. from Syracuse University and an MAT from Sacred Heart University. She hosts a radio talk show weekdays on 1490 WGCH AM. Her passion for art has led her to create "The Museum Comes to You," a program for seniors from Redding to Allendale, New Jersey. She has studied with Dr. Nachmani at the Metropolitan Museum of Art. It is her joy to share her delight in art by facilitating programs at LLI with others who share her interest or who are just curious and want to have Fun!

**Four sessions Fridays, July 13, 20, 27, August 3 at 10:10-11:50 am**

## POLITICS OF THE DOLLAR

To many Americans, the Dollar is little more than their medium of exchange: that Greenback which provides the ability to buy and sell, save and invest... Yet, the brutal fact is that this paper bludgeon is magnificently masked in a garb of deceptive flimsiness, a cudgel with an intimidation factor far more persuasive than any living and breathing soldier, sailor or marine. Every dollar is another paper legionnaire, or befeater of American Capitalism; a mindless, obedient servant, faithful to a fault . . . ready, willing and able to sacrifice itself on the remorseless battlefield of Realpolitik, to buy, subvert and coerce friend and foe alike in the service of *Pax Americana*.



*Mark Albertson* is the historical research editor at Army Aviation magazine in Monroe; and, is the historian for the Army Aviation Association of America. He has authored several books, including, *They'll Have to Follow You: The Triumph of the Great White Fleet*.

**Four sessions Tuesdays, July 10, 17, 24, 31, at 3:10-4:50pm**

## WATERCOLOR WORKSHOP



For those with previous watercolor experience. Each session starts with a short demonstration of one or two watercolor techniques followed by open time to work on your own masterpiece with input from the instructor. Bring a copy of the picture or subject you wish to paint; the instructor will show you how to transfer the image to watercolor paper. Bring paints (tubes preferred), a palette, your favorite brushes, watercolor paper and a water container to class.

*Bela Szabo enjoys working in watercolor, which allows him to create depth in paintings that are known for their realism and attention to detail. He brings this focus to class. His works have been exhibited in many area shows and have won numerous awards.*

**Four Tuesdays July 10, 17, 24, 31, at 10:00-11:50am**

## SCIENCE IN THE BIBLE

The Bible has served as a guide for many people of the world for millennia. It is now possible to explain—scientifically—specific events considered “miracles” in the Bible. The topics to be explored are: the Creation, Moses’ Ten Plagues and parting of the Red Sea, Noah’s flood, and the Star of Bethlehem. It is hoped, by examining these events and participating in class discussions, that the significance of these events will be better understood.



*Dr. Joel Block is an adjunct faculty member at UConn Stamford and Sacred Heart University, Fairfield. His specialty is Earth Science Education, including Science in the Bible. He received a Presidential Award for Excellence in science teaching, presented at the White House and the National Academy of Science.*

**Four sessions Thursdays, July 12, 19, 26, August 2 at 10:10 to 11:50 am**

## T'AI CHI– BALANCE OF A LIFETIME!



An introduction to this Chinese “slow motion meditation for health and self-protection,” is your key to generating a calm center, releasing stress, improving balance, and increasing available energy. We will focus on the most popular sequence in the Northeast – Professor Cheng’s Short Form, Yang Family Style. Each class will include a partner practice, “helping each other learn to relax,” as Master Ben Lo on the west coast put it, through “increasing sensitivity and responsiveness”. Though Tai Ci did originate as a martial art, this course emphasizes its meditative, stress-reducing and energy balancing aspects. This is a one-hour class. Please wear comfortable stretchable clothing.

*Ty Griese has a M.Ed. in Adaptive Physical Education from Springfield College, and has been a student of T'ai Chi since 1969, sharing this fine art since 1976. His principle instructors have been Myles MacVane, student of Professor Cheng, Man-Ching, Master William C.C. Chen (live-in protégé of the Professor on Taiwan) and Chung-Liang (Al) Huang – Humanistic Psychology and the Human.*

**Four sessions Thursdays, July 12, 19, 26, August 2 at 1:10 to 2:10pm**

## **2018 SUMMER – Lifetime Learners Course Schedule**

### **Tuesday**

10:10-11:50 AM	Current Events	Mark Albertson	7/10, 7/17, 7/24, 7/31
	Watercolor Workshop	Bela Szabo	7/10, 7/17, 7/24, 7/31
3:10-4:10 PM	Essentrics (1 hour)	June Euston Bird	7/10, 7/17, 7/24, 7/31
3:10-4:50 PM	Politics of the Dollar	Mark Albertson	7/10, 7/17, 7/24, 7/31

### **Wednesday**

10:10-11:50 AM	Four Iconic Songs	Joshua Berrett	7/11, 7/18, 7/25, 8/1
1:10 -2:50 PM	Great Sci. Fiction Films	Paul Gettler	7/11, 7/18, 7/25, 8/1

### **Thursday**

10:10 -11:50 AM	Science in the Bible	Joel Block	7/12, 7/19, 7/26, 8/2
1:10 -2:10 PM	Tai Chi (1 hour)	Tyler Griese	7/12, 7/19, 7/26, 8/2

### **Friday**

10:10 -11:50 AM	Impressionists at Home	Darby Cartun	7/13, 7/20, 7/27, 8/3
-----------------	------------------------	--------------	-----------------------

### **Lifetime Learners**

*Where people who love to learn  
learn from people who love to teach*

#### **Closures due to weather:**

Please check the following website for updated closure information: [www.Lifetimelearners.org](http://www.Lifetimelearners.org)

Cancellations will also be announced on Cablevision Channel 12, and the website [www.news12.com](http://www.news12.com)

***Class cancellations cannot be announced on the LLI Office phone system.***

In the event a class is cancelled, LLI will work to schedule a make-up class.

**Website: [www.lifetimelearners.org](http://www.lifetimelearners.org) E-mail: [info@lifetimelearners.org](mailto:info@lifetimelearners.org) Phone: 203-857-3330**

## Membership and Registration

### To Join/Membership:

- To join LLI, the minimum age is 50. Dues are \$50 per membership year. See below for payment.
- Membership includes four consecutive terms (equals one year).  
To check when your membership expires, see the LLI sticker on the back of your NCC Photo ID card.
- Your membership includes LLI catalogs, newsletters, invitations to special events, certain free winter programs, our free Friday Lunch & Learn series and access to the NCC Library.

### Registration & Payment:

- Course fees are \$30 per course. All courses require registration and payment in advance.
- **Online registration:** payment by credit card only. See [www.Lifetimelearners.org](http://www.Lifetimelearners.org) (See “Register here” button on left side.) Visa, MasterCard and Discover accepted.
- **Mail in or drop-off registration:** Must be paid by check, payable to Lifetime Learners Institute. Use the registration form on next page (form also available at [www.lifetimelearners.org](http://www.lifetimelearners.org)) Send your mail in registration form and check payable to Lifetime Learners to:  
*Lifetime Learners Institute at Norwalk Community College,  
Room W102, 188 Richards Avenue, Norwalk, CT 06854-1634*
- **Credit cards cannot be accepted by mail or in the office.**
- Course enrollment is on a first received, first enrolled basis, whether via internet or mail.
- Confirmation letters will be mailed (via US Mail) as registrations are processed.

### For your Information:

- **Guests** are not allowed to attend classes during Summer or Winter Sessions.
- **Incident Weather Closures:** Please see Channel 12 News or [www.lifetimelearners.org](http://www.lifetimelearners.org) for closure information. Closures cannot be announced on the LLI office phone system.
- **Office Hours:** Monday thru Thursday, 10am to 3pm, closed Friday.
- **E-mail:** [info@lifetimelearners.org](mailto:info@lifetimelearners.org) **Phone:** 203-857-3330 **Website:** [www.lifetimelearners.org](http://www.lifetimelearners.org).

### Refund Policy:

- Membership dues are not refundable.
- Course fees are refundable if a course is:
  - Not attended and the refund is requested before the end of that term —**or**—
  - Closed when the registration is received —**or**— Canceled by LLI.
- **All refunds are paid by check from the LLI office.**
- **Classes with insufficient enrollment will be cancelled, so please register early.**

# LLI MEMBERSHIP & REGISTRATION FORM – SUMMER 2018

LLI Membership Dues: \$50.00 for four consecutive terms. Fee per course: **\$30.00**

Name \_\_\_\_\_ Please indicate: Male \_\_\_ Female \_\_\_

Address \_\_\_\_\_ City \_\_\_\_\_

State, ZIP \_\_\_\_\_ Preferred phone \_\_\_\_\_

Email \_\_\_\_\_ (for LLI communications only)

Birth Date \_\_\_\_\_ (**Required by Norwalk Community College**)

**1<sup>st</sup> Course** \_\_\_\_\_

**Alternate** (only if closed out of above-listed course) \_\_\_\_\_

**2<sup>nd</sup> Course** \_\_\_\_\_

**Alternate** (only if closed out of above-listed course) \_\_\_\_\_

**3<sup>rd</sup> Course** \_\_\_\_\_

**Alternate** (only if closed out of above-listed course) \_\_\_\_\_

**4<sup>th</sup> Course** \_\_\_\_\_

**Alternate** (only if closed out of above-listed course) \_\_\_\_\_

**5<sup>th</sup> Course** \_\_\_\_\_

**Alternate** (only if closed out of above-listed course) \_\_\_\_\_

Membership Dues (**ONLY** if not a current member): \$50.00 \$ \_\_\_\_\_

Total number of courses \_\_\_\_\_ x \$30.00 \_\_\_\_\_

Contribution to LLI Scholarship Endowment \_\_\_\_\_

Contribution to NCC Foundation General Fund \_\_\_\_\_

**Total** \$ \_\_\_\_\_

I would prefer to receive future catalogs only via Email (earlier than US mail—saves time, paper & postage)

**How did you learn about LLI?** \_\_\_\_\_

Please note: Credit cards are accepted for online registration only.

Mail completed form, with check, to: **Lifetime Learners Institute at Norwalk Community College**  
**Room W102, 188 Richards Avenue, Norwalk, CT 06854**

E-mail: [info@lifetimelearners.org](mailto:info@lifetimelearners.org)

Phone: 203-857-3330

Website: [www.lifetimelearners.org](http://www.lifetimelearners.org)